



150914341080



中国认可  
国际互认  
检测  
TESTING  
CNAS L9334



微谱  
WEIPU

# Test Report

Report No. : WP-21046920-JC-01EnC2

Sample Origin : Customer Sample Delivery

Client : Shenzhen Esun Industrial Co.,Ltd

Wuhan University Building A402,

No.6 Yuexing2 Road, Nanshan

Address: District, Shenzhen

Shanghai WEIPU Chemical Technology Service Co., Ltd





# Test Report

The following sample(s) was/were submitted and identified on behalf of the applicant:

Sample Name: Please refer to next page(s).

Sample Description: /

Type: /

**Testing information:**

Date of Sample Received: 2021-04-28

Testing Period: 2021-04-28~ 2021-05-07

Test Item(s): Selected test (s) as requested by client.

Test Criterion: Please refer to next page(s).

Test Result: Please refer to next page(s).

Complied by :

Shuang Li

Approved by :

Caina Min

Issued Date :

2021-06-01



Report No. : WP-21046920-JC-01EnC2 Page(s) : 2 / 9

**Test Part Description :**

<u>Serial No.</u>	<u>Name</u>	<u>Sample ID</u>	<u>Description</u>	<u>Note</u>
001	Vacuum Bags	210414732-7	Transparent solid	Transparent plastic bag
002	Vacuum Bags	210414732-8	Blue solid	Blue plastic seal strip
003	Vacuum Bags	210414732-9	Colorless + blue solid	Viscous transparent plastic tape with blue printing

**Test Method and Apparatus :**

<u>Test Items</u>	<u>Test method</u>	<u>Apparatus</u>
Lead(Pb)	IEC 62321-5: 2013	ICP-OES
Cadmium(Cd)	IEC 62321-5: 2013	ICP-OES
Mercury(Hg)	IEC 62321-4: 2013+AMD1:2017CSV	ICP-OES
Hexavalent Chromium(Cr(VI) )	IEC 62321-7-2:2017	UV-Vis
Sum of PBBsand PBDEs	IEC 62321-6:2015	GC-MS
Dibutyl phthalate(DBP)	IEC 62321-8:2017	GC-MS
Butyl benzyl phthalate (BBP)	IEC 62321-8:2017	GC-MS
Bis (2-ethylhexyl) phthalate (DEHP)	IEC 62321-8:2017	GC-MS
Diisobutyl Phthalates (DIBP)	IEC 62321-8:2017	GC-MS

**Test Results:**

<u>Test Items</u>	<u>Unit</u>	<u>MDL</u>	<u>Limit</u>	<u>Serial No.</u> <u>001</u>
Lead(Pb)	mg/kg	2	1000	N.D.
Cadmium(Cd)	mg/kg	2	100	N.D.
Mercury (Hg)	mg/kg	2	1000	N.D.
Hexavalent Chromium (Cr(VI))	mg/kg	8	1000	N.D.
Sum of PBBs	mg/kg	-	1000	N.D.
Monobromobiphenyl	mg/kg	5	-	N.D.
Dibromobiphenyl	mg/kg	5	-	N.D.
Tribromobiphenyl	mg/kg	5	-	N.D.
Tetrabromobiphenyl	mg/kg	5	-	N.D.



<u>Test Items</u>	<u>Unit</u>	<u>MDL</u>	<u>Limit</u>	<u>Serial No.</u> <u>001</u>
Pentabromobiphenyl	mg/kg	5	-	N.D.
Hexabromobiphenyl	mg/kg	5	-	N.D.
Heptabromobiphenyl	mg/kg	5	-	N.D.
Octabromobiphenyl	mg/kg	5	-	N.D.
Nonabromobiphenyl	mg/kg	5	-	N.D.
Decabromobiphenyl	mg/kg	5	-	N.D.
Sum of PBDEs	mg/kg	-	1000	N.D.
Monobromodiphenyl ether	mg/kg	5	-	N.D.
Dibromodiphenyl ether	mg/kg	5	-	N.D.
Tribromodiphenyl ether	mg/kg	5	-	N.D.
Tetrabromodiphenyl ether	mg/kg	5	-	N.D.
Pentabromodiphenyl ether	mg/kg	5	-	N.D.
Hexabromodiphenyl ether	mg/kg	5	-	N.D.
Heptabromodiphenyl ether	mg/kg	5	-	N.D.
Octabromodiphenyl ethe	mg/kg	5	-	N.D.
Nonabromodiphenyl ether	mg/kg	5	-	N.D.
Decabromodiphenyl ether	mg/kg	5	-	N.D.
Dibutyl phthalate (DBP)	mg/kg	50	1000	N.D.
Butyl benzyl phthalate (BBP)	mg/kg	50	1000	N.D.
Bis (2-ethylhexyl) phthalate (DEHP)	mg/kg	50	1000	N.D.
Diisobutyl Phthalates (DIBP)	mg/kg	50	1000	N.D.

<u>Test Items</u>	<u>Unit</u>	<u>MDL</u>	<u>Limit</u>	<u>Serial No.</u> <u>002</u>
Lead(Pb)	mg/kg	2	1000	N.D.
Cadmium(Cd)	mg/kg	2	100	N.D.
Mercury (Hg)	mg/kg	2	1000	N.D.
Hexavalent Chromium (Cr(VI))	mg/kg	8	1000	N.D.
Sum of PBBs	mg/kg	-	1000	N.D.
Monobromobiphenyl	mg/kg	5	-	N.D.
Dibromobiphenyl	mg/kg	5	-	N.D.
Tribromobiphenyl	mg/kg	5	-	N.D.



<u>Test Items</u>	<u>Unit</u>	<u>MDL</u>	<u>Limit</u>	<u>Serial No.</u> <u>002</u>
Tetrabromobiphenyl	mg/kg	5	-	N.D.
Pentabromobiphenyl	mg/kg	5	-	N.D.
Hexabromobiphenyl	mg/kg	5	-	N.D.
Heptabromobiphenyl	mg/kg	5	-	N.D.
Octabromobiphenyl	mg/kg	5	-	N.D.
Nonabromobiphenyl	mg/kg	5	-	N.D.
Decabromobiphenyl	mg/kg	5	-	N.D.
Sum of PBDEs	mg/kg	-	1000	N.D.
Monobromodiphenyl ether	mg/kg	5	-	N.D.
Dibromodiphenyl ether	mg/kg	5	-	N.D.
Tribromodiphenyl ether	mg/kg	5	-	N.D.
Tetrabromodiphenyl ether	mg/kg	5	-	N.D.
Pentabromodiphenyl ether	mg/kg	5	-	N.D.
Hexabromodiphenyl ether	mg/kg	5	-	N.D.
Heptabromodiphenyl ether	mg/kg	5	-	N.D.
Octabromodiphenyl ether	mg/kg	5	-	N.D.
Nonabromodiphenyl ether	mg/kg	5	-	N.D.
Decabromodiphenyl ether	mg/kg	5	-	N.D.
Dibutyl phthalate (DBP)	mg/kg	50	1000	N.D.
Butyl benzyl phthalate (BBP)	mg/kg	50	1000	N.D.
Bis (2-ethylhexyl) phthalate (DEHP)	mg/kg	50	1000	N.D.
Diisobutyl Phthalates (DIBP)	mg/kg	50	1000	N.D.

<u>Test Items</u>	<u>Unit</u>	<u>MDL</u>	<u>Limit</u>	<u>Serial No.</u> <u>003</u>
Lead(Pb)	mg/kg	2	1000	N.D.
Cadmium(Cd)	mg/kg	2	100	N.D.
Mercury (Hg)	mg/kg	2	1000	N.D.
Hexavalent Chromium (Cr(VI))	mg/kg	8	1000	N.D.
Sum of PBBs	mg/kg	-	1000	N.D.
Monobromobiphenyl	mg/kg	5	-	N.D.
Dibromobiphenyl	mg/kg	5	-	N.D.



<u>Test Items</u>	<u>Unit</u>	<u>MDL</u>	<u>Limit</u>	<u>Serial No.</u> <u>003</u>
Tribromobiphenyl	mg/kg	5	-	N.D.
Tetrabromobiphenyl	mg/kg	5	-	N.D.
Pentabromobiphenyl	mg/kg	5	-	N.D.
Hexabromobiphenyl	mg/kg	5	-	N.D.
Heptabromobiphenyl	mg/kg	5	-	N.D.
Octabromobiphenyl	mg/kg	5	-	N.D.
Nonabromobiphenyl	mg/kg	5	-	N.D.
Decabromobiphenyl	mg/kg	5	-	N.D.
Sum of PBDEs	mg/kg	-	1000	N.D.
Monobromodiphenyl ether	mg/kg	5	-	N.D.
Dibromodiphenyl ether	mg/kg	5	-	N.D.
Tribromodiphenyl ether	mg/kg	5	-	N.D.
Tetrabromodiphenyl ether	mg/kg	5	-	N.D.
Pentabromodiphenyl ether	mg/kg	5	-	N.D.
Hexabromodiphenyl ether	mg/kg	5	-	N.D.
Heptabromodiphenyl ether	mg/kg	5	-	N.D.
Octabromodiphenyl ether	mg/kg	5	-	N.D.
Nonabromodiphenyl ether	mg/kg	5	-	N.D.
Decabromodiphenyl ether	mg/kg	5	-	N.D.
Dibutyl phthalate (DBP)	mg/kg	50	1000	N.D.
Butyl benzyl phthalate (BBP)	mg/kg	50	1000	N.D.
Bis (2-ethylhexyl) phthalate (DEHP)	mg/kg	50	1000	95
Diisobutyl Phthalates (DIBP)	mg/kg	50	1000	N.D.

**Conclusion :**

Based on the performed tests on selected part of submitted sample(s), the results of Lead, Mercury, Cadmium, Hexavalent chromium, Polybrominated biphenyls (PBBs), Polybrominated diphenyl ethers (PBDEs) and Phthalates such as Bis(2-ethylhexyl) phthalate (DEHP) , Butyl benzyl phthalate (BBP), Dibutyl phthalate (DBP) , and Diisobutyl phthalate (DIBP) comply with the limits as set by RoHS Directive (EU) 2015/863 amending Annex II to Directive 2011/65/EU.

\*\*\*End of the Page\*\*\*



Report No. : WP-21046920-JC-01EnC2

Page(s) : 6 / 9

**Remarks :**

- (1) 1mg/kg = 1ppm = 0.0001%
- (2) MDL =Method Detection Limit
- (3) N.D.=Not Detected ( < MDL)
- (4) “ - ” =Not Regulated

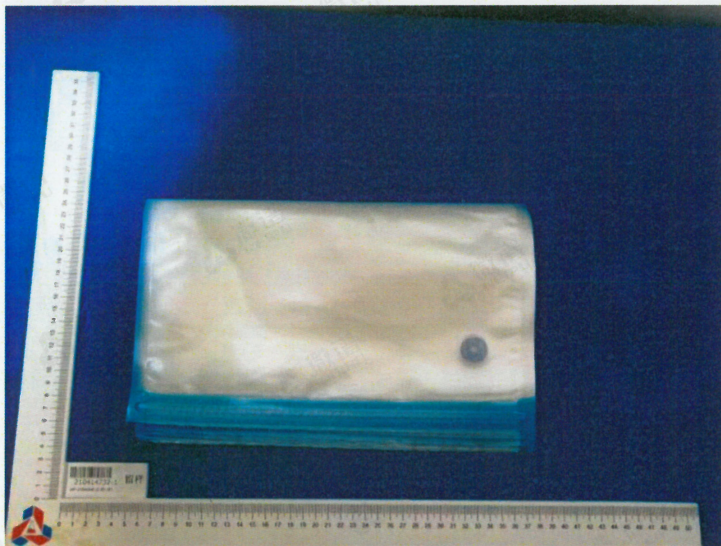
\*\*\*End of the Page\*\*\*



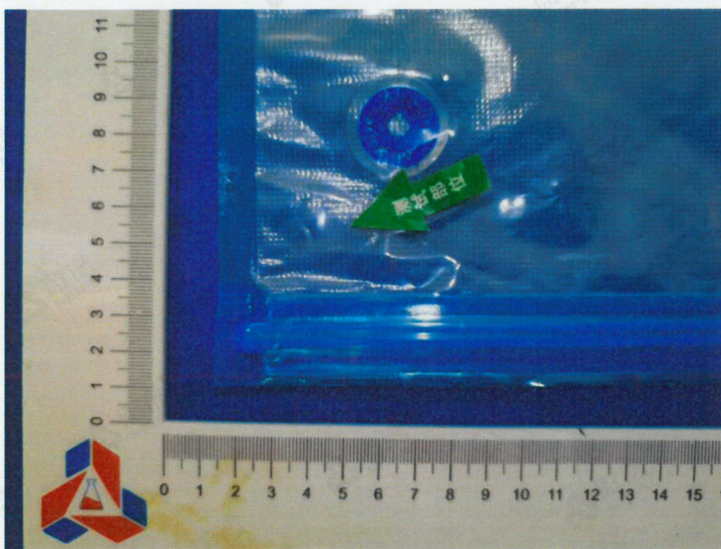
Report No. : WP-21046920-JC-01EnC2

Page(s) : 7 / 9

Sample picture(s):

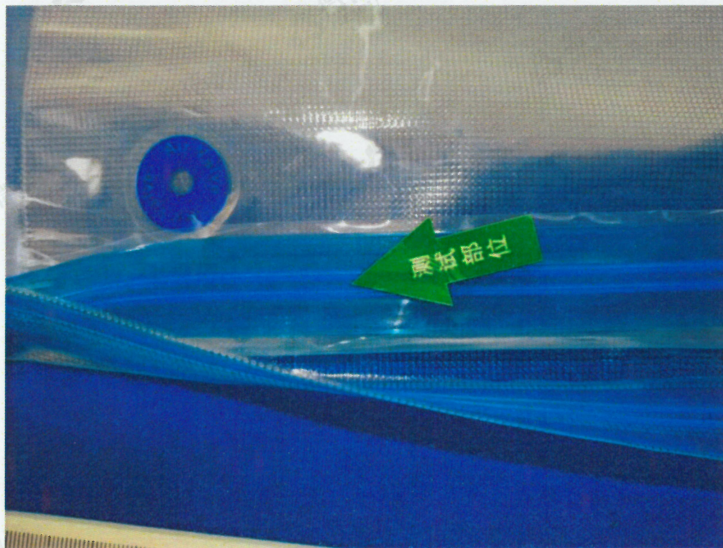


Whole picture

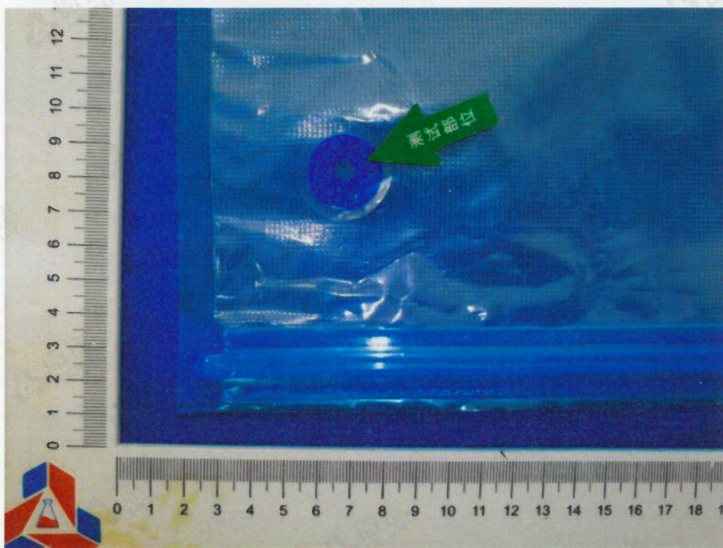


210414732-7





210414732-8



210414732-9

**Note: according to customer requirements, pump and vacuum bag separately report. This report is the second split report of WP-21046920-JC-01En. This test report replaces the test report number: WP-21046920-JC-01En, and the original report is invalid.**

**\*\*\*End of the Report\*\*\***



## —DECLARE—

1. The report is invalid without the stamp of "Special Seal for Inspection or Testing" or without "Special Seal for the Report" or without the signature of the compiler and the approver.
2. No unauthorized changes, additions or deletions shall be made to the report.
3. Neither fragmented report nor its incomplete copy shall be deemed valid. The complete copy is invalid without the stamp of "Special Seal for Inspection or Testing" or "Special Seal for the Report".
4. Any queries on the report shall be presented to us within 15 working days after receipt of the report.
5. The results described here in this report are based on the sample(s) tested. The data and results shown in the report without CMA logo are not used as proof for society, only for internal uses.
6. The applicant takes full responsible for the truthfulness of the testing sample(s) and information related thereto.
7. Without the permission of the company, any party is prohibited from using the test results and the report for undue publicity.

